

Features

- Image size scalable down to icon using vertical & horizontal Interpolation filtering

System Requirements

- Pentium 133 or higher
- System memory 32MB or higher
- Windows 98 or later version
- VGA display in 32K, 64K, or 16.7M color mode with hardware assisted video playback acceleration and DirectDraw 5.0 supported
- Sound card and speakers required for audio support

Hardware Installation

To install your video camera, please follow the instructions below:

1. Unplug the power cord from the back of your computer.
2. Locate a free USB socket.
3. Connect the USB connector to the USB socket.
4. Re-attach the power cable to your PC system.
5. Power on your system.

NOTE: If you connect your USB camera through a **USB hub**, make sure that the USB hub has DC power adapter connected. The USB camera can not work if connected to a hub without external power supply.

Driver Installation

Installing the USB Drivers in Windows 98

Follow the instructions below to install the device driver.

1. After starting up, Windows 98 automatically detects an `Unknown device` which is your camera and the Add New Hardware Wizard pops up. Click on *Next*.

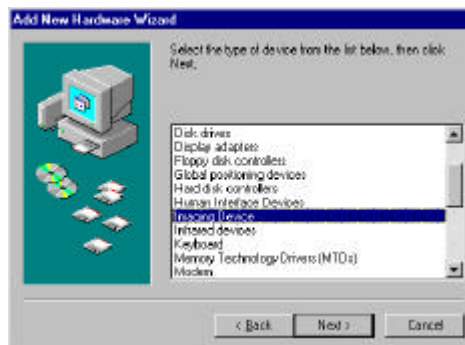


NOTE: If you are not prompted with the “Add New Hardware Wizard” box, make sure “USB IRQ: Enable” in BIOS of your computer. Otherwise, the PC USB Camera can’t work.

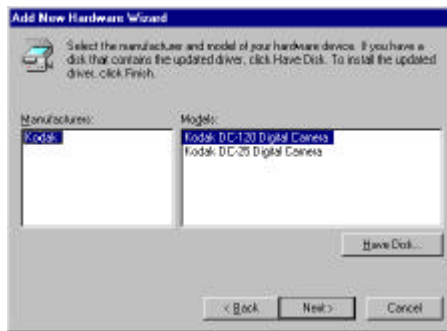
2. Select the *Display a list of all the drivers in a specific location* option and click on *Next*.



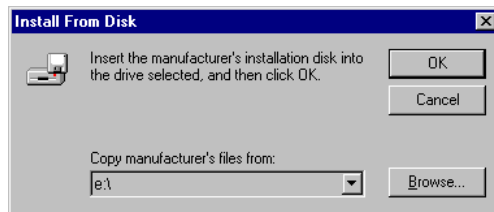
3. Select the device type: *Imaging Device* and click on *Next*.



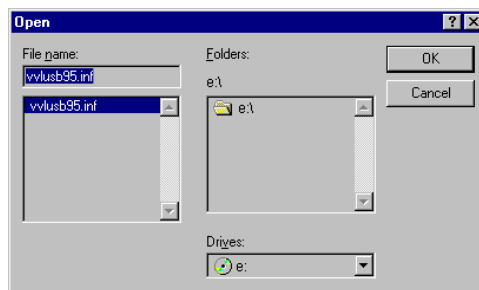
- Click on *Have Disk*, and insert the provided CD into your CD-ROM drive.



- The Install From Disk dialog box pops up. Click on *Browse* icon to search for the path of the device driver.



- The Open dialog box will now appear. Specify the path of the file [Drive]:\vvlusb95.inf from your CD-ROM drive, and click *OK*.



- The Select Device dialog box will display you the name of the camera: `CMOS-A USB Camera`. Click on *Next*.



- Windows has now found the path of the driver. Click on *Next* to continue.

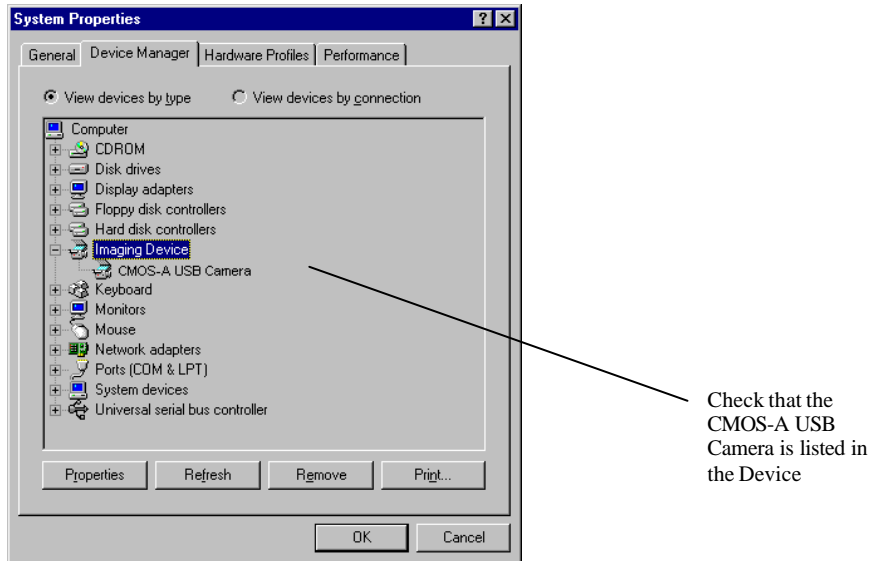


- After the driver software is installed successfully, click on *Finish*.



Verifying the Completion of Installation

To ensure that the camera is installed properly and the driver installation is successful, go to *My Computer – Control Panel – System*. Check in the Device Manager tab from the System Properties dialog box.



If you see the `CMOS-A USB Camera` is listed in the device manager, you have installed the camera successfully. If you don't see this or if you see an exclamation mark beside `CMOS-A USB Camera`, we suggest you remove this device and reinstall the device.

After driver installation, then install the VP EYE software (enclosed in the provided CD). Follow the onscreen instructions to finish the installation. With problems, refer to the **Manual** enclosed with the software.